

Industrial ~ The Saunder's Steam Museum

Stotfold, Bedfordshire



Proposed Initial Masterplan and Visualisation of Scheme by DLP

Project Description

Our client holds one of the largest UK collections of steam engines and working steam artifacts, such as locomotives, carousels, ploughs and a steam boat, requiring a large, industrial sized building to house them in, with external paved surfaces, as a permanent public exhibition. The building is multi functional, providing the exhibitions space, alongside entertainment space with a staged auditorium and refreshment/restaurant facilities.

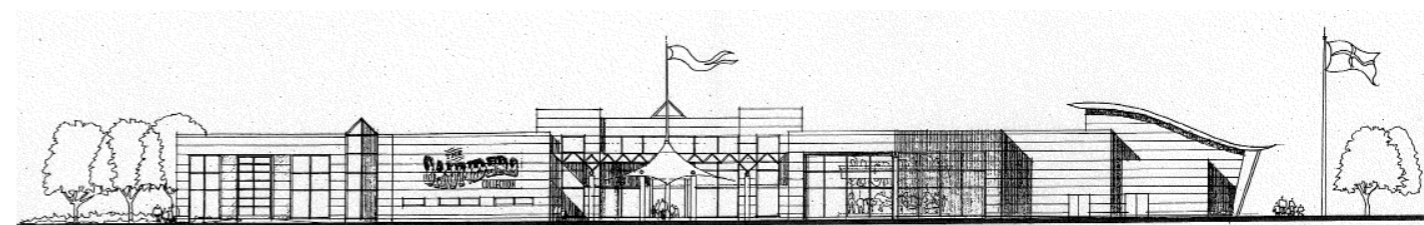
ELD was responsible for creating a sympathetic external design, that aligned to the Bedfordshire Landscape Character, with an element of screening from the A1, whilst providing visibility to potential visitors. Incorporation of ecological enhancement measures and SUDS were key factors, using rainwater harvested from the car parking areas to feed the lake that housed the steam boat display. Therefore careful contour design was required to ensure a naturalistic effect.

A nature reserve is located at the eastern end of the site, into which a country park, cycleway and footpath network shall link the museum facility. Picture boards to demonstrate material palletes were produced as part of the Design and Access Statement and planning submission. Layout reviews were part of scheme development and the illustrations show how the scheme progressed.

Project Particulars

Client: Private

Project Manager: DLP



Proposed Elevation Above, with Materials Palletes for Hard and Soft Landscape