

Education ~ Redbridge High School Extension

London Borough of Redbridge, London

"An enjoyable and collaborative design process – with great results to show for it." Claire Wakelin, Ellis Williams Architects.



Concept Sketch View.

Project Description

ELD was part of the bid team for a secondary school campus extension in the London Borough of Redbridge. The scheme involved the construction of 9,000m² of new school accommodation, to complement and connect to the existing facilities.

The landscape was broken down into district components forming a pedestrian and vehicular entrance way, arrival space, and central courtyard. The courtyard forms the heart of the scheme & is intended for social and educational activities.

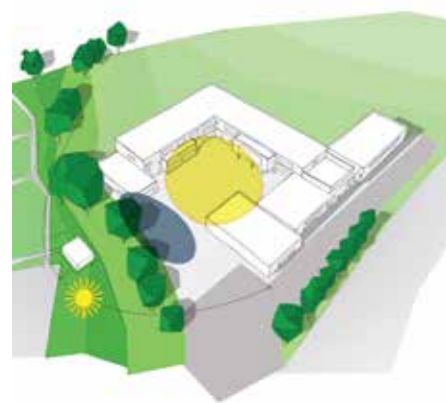
A flexible approach was taken to outdoor learning, with a number of different landscape 'settings' created within a holistic masterplan. These settings notably include a wooded glade with scattered seating for small groups; a raised amphitheatre for teaching/peer group presentation & an outdoor dining terrace. The landscape design has developed closely with the internal building layout to create suitable adjacent outdoor spaces.

ELD Requirements

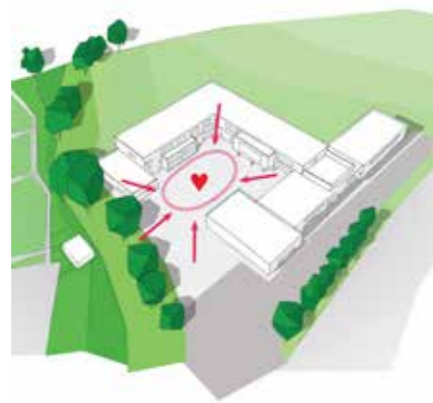
- To complete alternative concept designs.
- Preparation of material for presentations & liaison with the school body via the Architect.
- To complete a design, coordinated with tree and ecological surveys.
- Develop a cost effective materials palette, within the budget.

Project Particulars

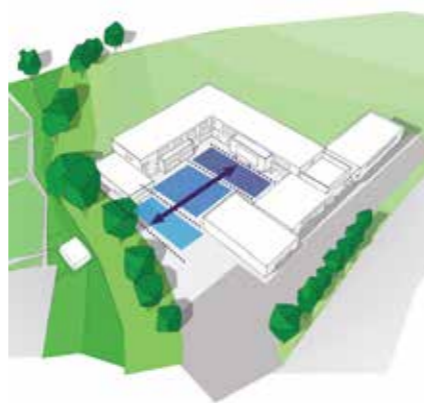
Client: London Borough of Redbridge
 Architect: EWA, London.
 Capital Value: £16 million



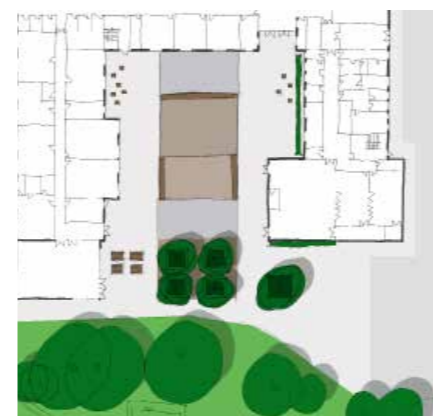
Solar Gain Analysis.



Spatial Structure Analysis.



Spatial Progression Analysis.



Design Option 1.



Design Option 2.



Design Option 3.